

| | | |
|-------|----------|-------|
| DATE: | PROJECT: | TYPE: |
|-------|----------|-------|

CATALOG NUMBER LOGIC:



**Designed for use with LED transformer. Requires magnetic low voltage dimmer.*

***Please see Adjust-e-Lume photometry to determine desired intensity.*

****The 360SL cost is already included in the price of UPM, UPM dual, and Power Canopy.*

CATALOG NUMBER LOGIC

Example: B - DS - LED - e64 - SP - A7 - BZP - 12 - 11 - A - 360SL

MATERIAL

(Blank) - Aluminum B - Brass S - Stainless Steel

SERIES

DS - Delta Star

SOURCE

LED - with Integral Dimming Driver (25W min. load when dimmed)*

LED TYPE

e64 - 7W LED/2700K e79 - 7W LED/2700K 90CRI

e65 - 7W LED/3000K e80 - 7W LED/3000K 90CRI

e66 - 7W LED/4000K e81 - 7W LED/3500K 80CRI

e74 - 7W LED/Amber

OPTICS

NSP - Narrow Spot (13°) MFL - Medium Flood (23°)

SP - Spot (16°) WFL - Wide Flood (31°)

ADJUST-E-LUME® OUTPUT INTENSITY**

A9 (Standard), A8, A7, A6, A5, A4, A3, A2, A1

FINISH (See page 2 for full-color swatches)

Standard Finishes (BZP, BZW, BLP, BLW, WHP, WHW, SAP, VER)

Premium Finish (ABP, AMG, AQW, BCM, BGE, BPP, CAP, CMG, CRM, HUG, NBP, OCP, RMG, SDS, SMG, TXF, WCP, WIR)

Also available in RAL Finishes

Brass Finishes (MAC, POL, MIT)

Stainless Steel Finishes (MAC, POL)

LENS TYPE

12 - Soft Focus 13 - Rectilinear

SHIELDING

11 - Honeycomb Baffle

CAP STYLE

A - 45°

B - 90°

C - Flush Lens

D - 45° Less Weephole (Interior use only)

E - 90° Less Weephole (Interior use only)

F - 90° with Flush Lens

OPTION

360SL - Knuckle Mounting System***

MOD OPTIONS

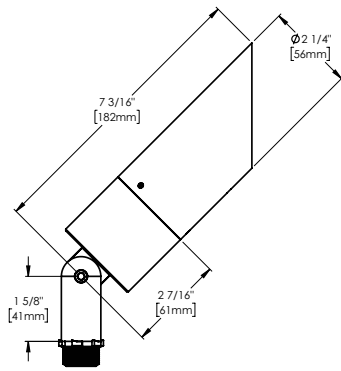
5 - 5 Ft Leads

25 - 25 Ft Leads

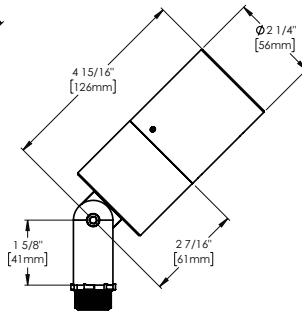
DATE:

PROJECT:

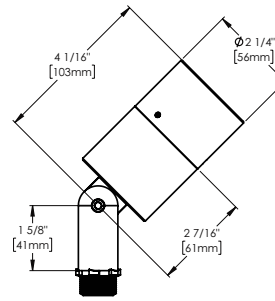
TYPE:



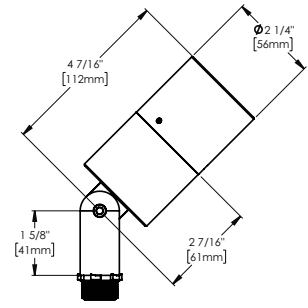
A/D CAP



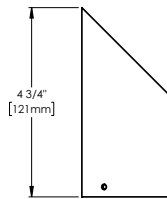
B/E CAP



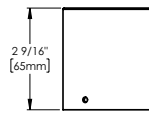
C CAP



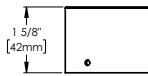
F CAP



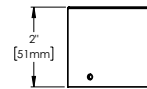
A/D CAP



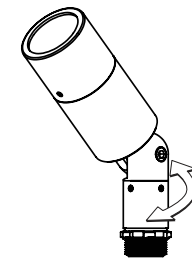
B/E CAP



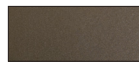
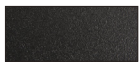
C CAP



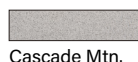
F CAP

Horizontal Rotation
(Optional 360SL Knuckle)

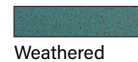
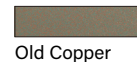
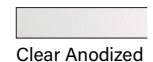
STANDARD FINISHES

Satin Black
(BLP)Satin Bronze
(BZP)Satin White
(WHP)Satin Aluminum
(SAP)Black Wrinkle
(BLW)Bronze Wrinkle
(BZW)White Wrinkle
(WHW)Verde
(VER)

PREMIUM FINISHES

Cascade Mtn.
Granite (CMG)Rocky Mtn.
Granite (RMG)Sierra Mtn
Granite (SMG)Aleutian Mtn
Granite (AMG)Textured Forest
(TXF)Black Chrome
(BCM)

Beige (BGE)

Weathered
Copper (WCP)Old Copper
(OCP)Hunter Green
(HUG)Antique Brass
Powder (ABP)Brown Patina
Powder (BPP)Sonoran Desert
Sandstone (SDS)Weathered Iron
(WIR)Clear Anodized
Powder (CAP)Cream
(CRM)Antique White
(AQW)Natural Brass
Powder (NBP)

[Click Here](#) to view larger, full-color swatches of all available finishes on our website.

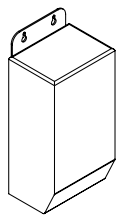
B-K LIGHTING

MADE IN THE USA

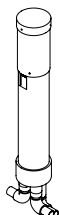
559.438.5800 | INFO@BKLIGHTING.COM | BKLIGHTING.COM

| | | |
|-------|----------|-------|
| DATE: | PROJECT: | TYPE: |
|-------|----------|-------|

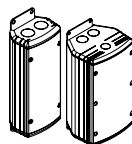
Accessories (Configure separately)



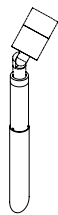
TR Series



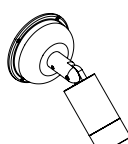
Power Pipe



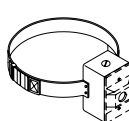
UPMRM



Power Pipe



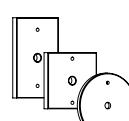
Power Canopy



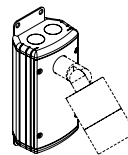
Tree Strap



Stems






Canopies



UPM

SPECIFICATIONS

| | | |
|---|-------------------------|---|
| ELECTRICAL | WATTAGE | 7W LED |
| | WIRING | XLPE, 18GA,150C, 600V, rated and certified to UL3321. |
| | REMOTE TRANSFORMER | For use with 12VAC remote transformer or magnetic transformers only. B-K Lighting cannot guarantee performance with third party manufacturers' transformers. |
| PHYSICAL | MATERIALS | Furnished in copper-free aluminum (6061-T6), brass (360) or stainless steel (304). |
| | BODY | Unibody design with enclosed, water-proof wireway and integral heat sink is fully machined from solid billet. |
| | KNUCKLE | LOCK Knuckle is integral to the body and features an interior taper machined from solid billet and a second, reverse angle taper allowing full 180° vertical adjustment without the use of aim-limiting serrated teeth. High temperature, silicone 'O' Ring provides water-tight seal and compressive resistance to maintain fixture position. Design withstands 73 lbs. static load prior to movement for optical alignment with a 1/2" pipe thread for mounting. Optional 360SL provides biaxial source control with 360° horizontal rotation in addition to vertical adjustment. |
| | CAP | Fully machined and accommodates two (2) lens or louver media. |
| | LENS | Shock-resistant, tempered glass lens is factory adhered to fixture cap and provides hermetically sealed optical compartment. |
| | LED | Integrated solid state system and modular design with electrical disconnects allow for easy field upgrade and maintenance. High power, forward throw source complies with ANSI C78.377 binning requirements and exceeds ENERGY STAR® lumen maintenance requirements. LM-80 certified components. Integral, constant current driver. 12VAC/VDC input. 50/60Hz. Proprietary input control scheme achieves power factor correction and eliminates inrush current (limited to <250mA non-dimming). Output, overvoltage, open-circuit, and short circuit protected. Conforms to Safety Std. C22.2 No. 250.13-12. |
| | DIMMING | Line voltage dimmable via magnetic low voltage dimmer with dedicated neutral conductor. Remote magnetic transformer with LED loads should be loaded to 25% of the transformer VA (watts) rated value. |
| | ADJUST-E-LUME | Integral electronics allow for dynamic lumen response at the individual fixture. Indexed (100% to 25% nom.) lumen output. Maintains output at desired level or may be changed. Specify factory preset output intensity. |
| | OPTICS | Interchangeable OPTIKIT modules permit optical field changes. Color-code: Narrow Spot (NSP) = red; Spot (SP) = green; Medium Flood (MFL) = yellow; Wide Flood (WFL) = blue. |
| | HARDWARE | Tamper-resistant, stainless steel hardware. LOCK aiming screw is black oxide treated for additional corrosion resistance. |
|    | FINISH | StarGuard, our 15-stage chromate-free process cleans and conversion coats aluminum components prior to application of Class 'A' TGIC polyester powder coating and is RoHS compliant. Powder coat or metal finish options available for brass material and metal finish option only for stainless steel material. |
| | WARRANTY | 5-year limited warranty. |
| | CERTIFICATION & LISTING | ITL tested to IESNA LM-79. UL Listed. Certified to CAN/CSA/ANSI Standards. RoHS compliant. Suitable for indoor or outdoor use, in wet locations, and for installation within 4' of the ground. IP66 Rated. Made in the USA with sustainable processes. |

B-K LIGHTING

MADE IN THE USA

559.438.5800 | INFO@BKLIGHTING.COM | BKLIGHTING.COM

LAMP & DRIVER DATA (e64, e65, e66, e74)

DATE:

PROJECT:

TYPE:

| DRIVER DATA | Input Volts | InRush Current | Operating | Dimmable | Operation Ambient Temperature |
|-------------|------------------|---------------------|-----------|-----------------------------|-------------------------------|
| | 12VAC/DC 50/60Hz | <250mA (non-dimmed) | 700mA | Magnetic Low Voltage Dimmer | -22°F-194°F (-30°C - 90°C) |

| LM79 DATA | | | | L70 DATA | | OPTICAL DATA | | | |
|-----------|------------|------------|--------------------|---|--|--------------|-------|------------------|------------|
| BK No. | CCT (Typ.) | CRI (Typ.) | Input Watts (Typ.) | Minimum Rated Life (hrs.) 70% of initial lumens (L ₇₀) | | Angle | CBCP | Delivered Lumens | Multiplier |
| e64 | 2700K | 80 | 7 | 50,000 | | 13° | 5993 | 456 | 0.87 |
| | 2700K | 80 | 7 | 50,000 | | 16° | 4546 | 445 | 0.87 |
| | 2700K | 80 | 7 | 50,000 | | 23° | 1726 | 397 | 0.87 |
| | 2700K | 80 | 7 | 50,000 | | 31° | 1131 | 399 | 0.87 |
| e65 | 3000K | 80 | 7 | 50,000 | | 13° | 6131 | 466 | 0.89 |
| | 3000K | 80 | 7 | 50,000 | | 16° | 4650 | 455 | 0.89 |
| | 3000K | 80 | 7 | 50,000 | | 23 | 1766 | 406 | 0.89 |
| | 3000K | 80 | 7 | 50,000 | | 31° | 1157 | 409 | 0.89 |
| e66 | 4000K | 80 | 7 | 50,000 | | 13° | 6889 | 524 | |
| | 4000K | 80 | 7 | 50,000 | | 16° | 5225 | 511 | |
| | 4000K | 80 | 7 | 50,000 | | 23° | 1984 | 456 | |
| | 4000K | 80 | 7 | 50,000 | | 31° | 1300 | 459 | |
| e74 | Amber | 80 | 7 | 50,000 | | 13° | 3,927 | 299 | 0.57 |
| | Amber | 80 | 7 | 50,000 | | 16° | 2,978 | 291 | 0.57 |
| | Amber | 80 | 7 | 50,000 | | 23° | 1,131 | 260 | 0.57 |
| | Amber | 80 | 7 | 50,000 | | 31° | 741 | 262 | 0.57 |

OPTICS

| Optic | Angle |
|--------------------|-------|
| NSP - Narrow Spot | 13° |
| SP - Spot | 16° |
| MFL - Medium Flood | 23° |
| WFL - Wide Flood | 31° |

B-K LIGHTING

MADE IN THE USA

559.438.5800 | INFO@BKLIGHTING.COM | BKLIGHTING.COM

THIS DOCUMENT CONTAINS PROPRIETARY INFORMATION OF B-K LIGHTING, INC. AND ITS RECEIPT OR POSSESSION DOES NOT CONVEY ANY RIGHTS TO REPRODUCE, DISCLOSE ITS CONTENTS, OR TO MANUFACTURE, USE OR SELL ANYTHING IT MAY DESCRIBE. REPRODUCTION, DISCLOSURE OR USE WITHOUT SPECIFIC WRITTEN AUTHORIZATION OF B-K LIGHTING, INC. IS STRICTLY FORBIDDEN.