

DATE:	PROJECT:	TYPE:
-------	----------	-------

CATALOG NUMBER LOGIC:

**CATALOG NUMBER LOGIC**

Example: TMB - D34ARC - BZW - MT

**MATERIAL**

Aluminum

**SERIES**

TMB - Tenon Mount Box

**DRIVER TYPE\***

D23 - 23W Dimming Driver (Standard Dimming 1-100%)

D34 - 34W Dimming Driver (Standard Dimming 1-100%)

D23ARC - 23W Dimming Driver (Architectural Dimming 0.1-100%)

D34ARC - 34W Dimming Driver (Architectural Dimming 0.1-100%)

**FINISH (See page 2 for full-color swatches)**

Standard Finishes (BZP, BZW, BLP, BLW, WHP, WHW, SAP, VER)

Premium Finish (ABP, AMG, AQW, BCM, BGE, BPP, CAP, CMG, CRM, HUG, NBP, OCP, RMG, SDS, SMG, TXF, WCP, WIR)

(Also available in RAL Finishes. See submittal SUB-1439-00)

**INPUT VOLTAGE**

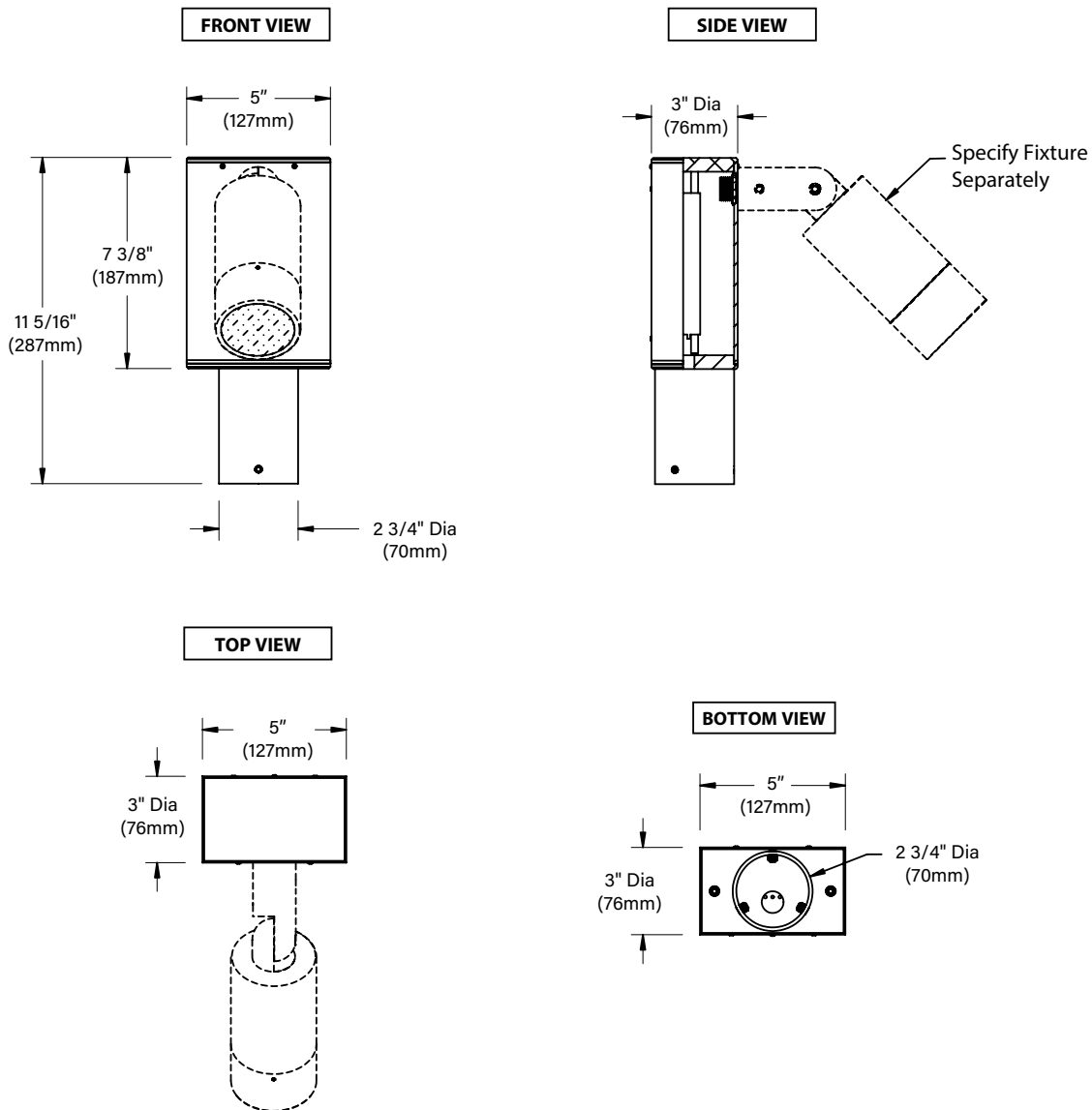
MT - 120-277 VAC

*\*For use with 0-10 dimmer. Driver wattage must match fixture wattage.*

# YOSEMITE - TMB INTEGRAL DRIVER HOUSING

ORDER FIXTURE SEPARATELY.

DATE:	PROJECT:	TYPE:
-------	----------	-------



## STANDARD FINISHES



[Click Here](#) to view larger, full-color swatches of all available finishes on our website.

## PREMIUM FINISHES



**B-K LIGHTING**

**MADE IN THE USA**

559.438.5800 | [INFO@BKLIGHTING.COM](mailto:INFO@BKLIGHTING.COM) | [BKLIGHTING.COM](http://BKLIGHTING.COM)

THIS DOCUMENT CONTAINS PROPRIETARY INFORMATION OF B-K LIGHTING, INC. AND ITS RECEIPT OR POSSESSION DOES NOT CONVEY ANY RIGHTS TO REPRODUCE, DISCLOSE ITS CONTENTS, OR TO MANUFACTURE, USE OR SELL ANYTHING IT MAY DESCRIBE. REPRODUCTION, DISCLOSURE OR USE WITHOUT SPECIFIC WRITTEN AUTHORIZATION OF B-K LIGHTING, INC. IS STRICTLY FORBIDDEN.




12/06/2022 SKU-1254

DATE:	PROJECT:	TYPE:
-------	----------	-------

Accessories (Configure separately)

## SPECIFICATIONS

Electrical	WIRING / CONNECTORS	Teflon® coated wire, 18 gauge, 600V, 250° C rated and certified to UL 1659 standard. Pre-wired and labeled terminal strip.
	DRIVER (23-34W)	One (1) 700mA, Class A, constant current driver. 120-277VAC (nominal) primary input voltage, 50/60Hz. >0.94 Power Factor, 6A in-rush current, 0.25A input current, <20%THD (nominal at 120VAC full load). Output over-voltage, over-current, and short circuit protection with auto recovery. EMC: FCC47CFR Part 15 Class B compliant. Dimming driver for use with standard incandescent dimmers. 10-100% range.
PHYSICAL	MATERIALS	Furnished in copper-free aluminum (6061-T6).
	INSTALLATION	For mounting to 2" IPS (2-3/8" O.D.) Tenon. Removeable bottom with Neoprene gasket. 2-1/2" I.D. slip fitter. Accepts 360SL and 360HD adjustable mounting systems, allows rotational adjustment with 'O' Ring seal and tamper-resistant design.
	FINISH	StarGuard, our 15-stage, chromate-free process cleans and conversion coats aluminum components prior to application of Class 'A' TGIC polyester powder coating and is RoHS compliant.
	WARRANTY	5-year limited warranty.
	CERTIFICATION & LISTING	Certified to CAN/CSA/ANSI standards. UL Listed. RoHS compliant. Made in USA with sustainable processes.

B-K LIGHTING

MADE IN THE USA

559.438.5800 | INFO@BKLIGHTING.COM | BKLIGHTING.COM